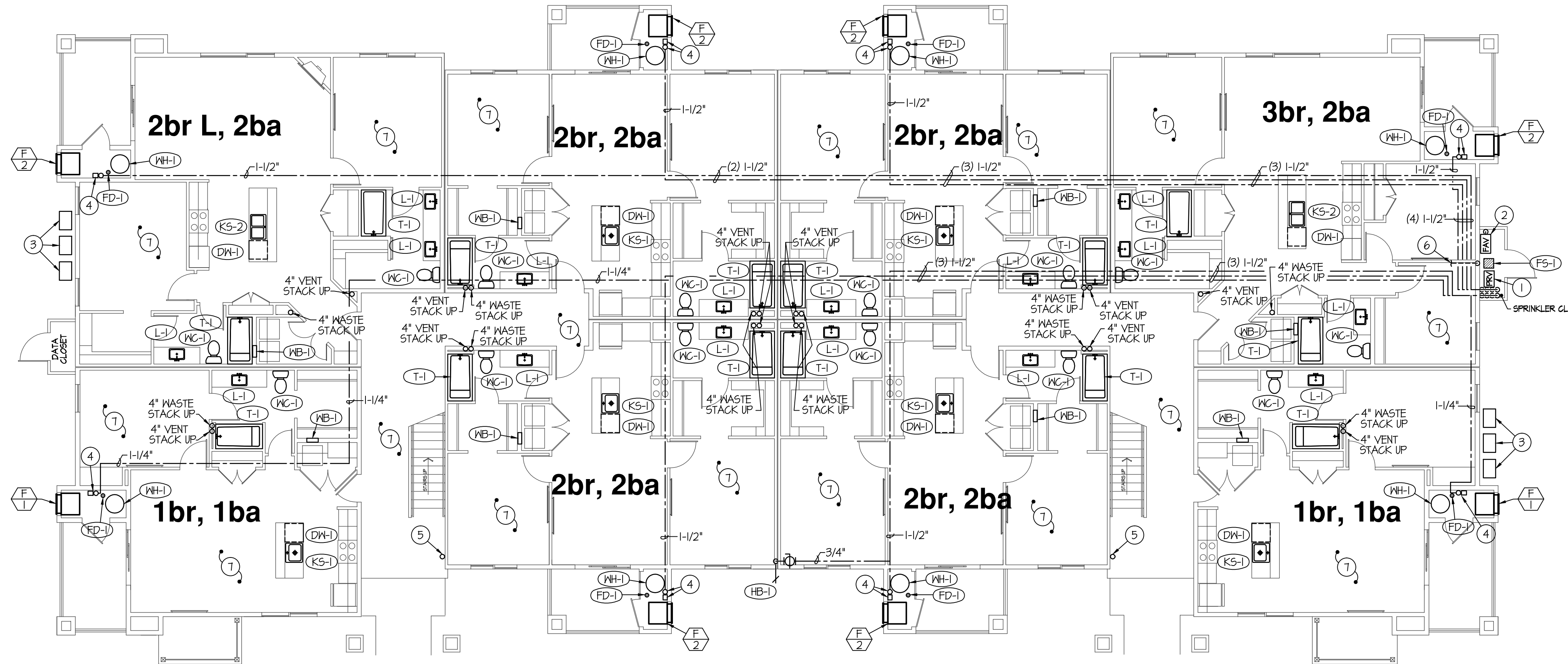


**SPECIAL NOTE:**  
SEE LARGE SCALE PLANS ON SHEETS P200 AND P201 FOR TYPICAL WASTE, WATER, VENT AND GAS PIPING FOR INDIVIDUAL APARTMENTS.



**1ST FLOOR PLUMBING PLAN**  
**2ND AND 3RD LEVELS SIMILAR**  
SCALE: 1/8" = 1'-0"

**SPECIAL NOTE:**  
MIRROR PLANS AS REQUIRED FOR INDIVIDUAL SITE LAY-OUT

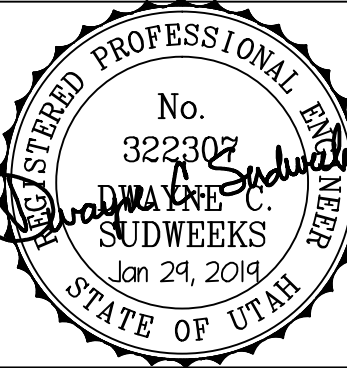
**PLAN NOTES:**

- 1 3" WATER RISER ASSEMBLY FOR ENTIRE BUILDING CM SERVICE. PROVIDE MANFOLD WITH (8) INDIVIDUAL SHUT-OFF VALVES FOR 24 UNIT BUILDING. SEE DETAIL ON SHEET P300.
- 2 4" FIRE LINE UP THRU SLAB FLOOR TO FIRE RISER IN ROOM. SEE DETAIL ON SHEET P300 FOR RISER INFORMATION.
- 3 GAS METER TREE (12 METERS). SIZE OF GAS METERS TO MATCH LOADS OF INDIVIDUAL APT. GAS LOADS FOR FURNACE. SEE MECH. SCHEDULE FOR BTU INFORMATION. DELIVERY PRESSURE TO BE IN OUNCES. SEE LARGE SCALE PLANS ON SHEET P200 FOR PIPING TO FURNACES. COORDINATE EXACT LOCATION OF METERS WITH ELECTRICAL EQUIPMENT TO MAINTAIN CLEARANCES AS REQUIRED.
- 4 DOMESTIC WATER LINE SERVING 3 FLOORS OF APTS. SEE LARGE SCALE PLANS ON SHEET P200 & P201 FOR SIZE OF WATER LINES AND DETAIL ON SHEET P300.
- 5 INSTALL 2-1/2" DRY STAND PIPE IN LOCATION SHOWN FOR FIRE DEPT HOSE CONNECTIONS. STAND PIPE TO BE CONTINUOUS FOR ALL 3 FLOORS. INSTALL 2-1/2" FIRE DEPT CONNECTION AT EACH LEVEL. VERIFY FINAL LOCATION WITH LOCAL FIRE MARSHAL.
- 6 CONNECT 2" VENT SERVING FLOOR SINK TO NEAREST APARTMENT VENT SYSTEM LINE THAT IS 2" OR LARGER.
- 7 INSTALL COMPLETE FIRE SPRINKLER SYSTEM FOR ALL LEVELS OF APTS. AS PER NFPA 13 REQUIREMENTS.



**Engineered Systems Associates**  
**Mechanical Engineers**  
Dwayne Sudweeks  
1355 East Center - Pocatello, Idaho 83201  
Phone: (208) 233-0501 Fax: (208) 233-0529 email: esa@engsystems.com

**STRATA APARTMENTS**  
LOGAN, UTAH  
PROJECT:  
SHEET TITLE: **PLUMBING FLOOR PLANS**



DRWN. BY: SR	CHK. BY: DCS
JOB NO. 18043	DATE: DEC. 2018

SHEET:  
**01**  
OF: **FOUR**